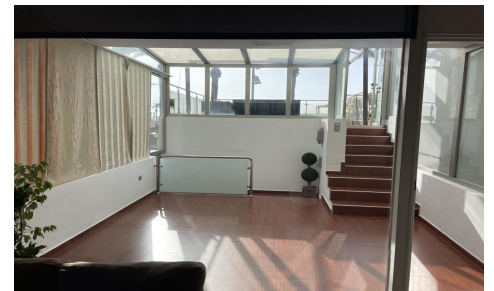
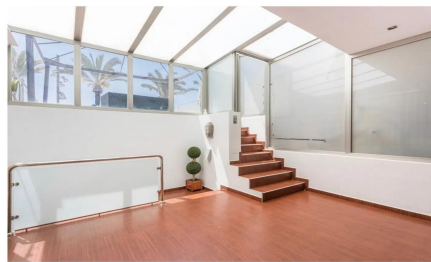


SMC8381M



Duplex in Torrevieja

€489,000



4



3



180m²



N/A



N/A

Frontline Duplex with Sea Views, 4 Beds, Terraces Spacious and bright duplex with private entrance, several terraces, and spectacular sea views — located directly on the seafront, just steps from Playa del Cura. Includes private parking in the price. On the ground floor: a cozy covered winter terrace, a sunny 20 m² open terrace, large living-dining room, spacious fully equipped kitchen w...(Ask for More Details!)

