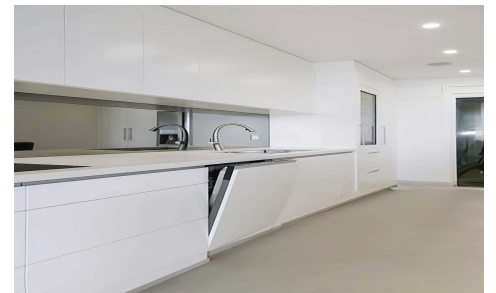
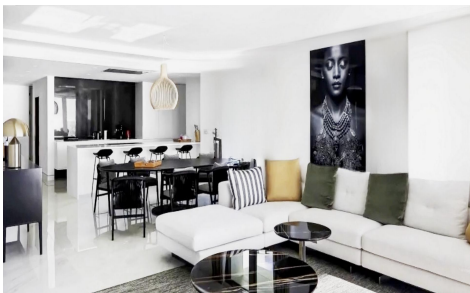


SRS3289F



## Apartment in Relleu

€185,000



1



1



70m<sup>2</sup>



N/A



Residential complex in Relleu with communal swimming pool and open views&#13;&#13;This is a complete renovation of a building constructed several years ago that was left unfinished. It is the ideal place for those who want a quality home in a beautiful location with all amenities nearby.&#13;&#13;The building has 7 floors with 2 staircases and 2 lifts. In the basement there are 69 parkin...(Ask for More Details!)



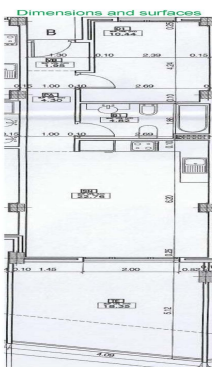
Plano distribución orientativo, no constituye documento contractual. Sujeto a pequeñas modificaciones por necesidades constructivas o de diseño.  
*An indicative distribution plan does not constitute a contractual document. Subject to small modifications due to construction or design needs.*



Table of housing surfaces

**Cuadro de superficies de viviendas 2ºB**  
**Table of housing surfaces 2ºB**

Nº	Posición = Position	m <sup>2</sup>
1	Vestíbulo - Lobby	1,99
2	Sala - Comedor - Living-Dinning room	22,74
3	Pasillo - Hall	4,30
4	Dormitorio = bedroom	10,44
5	Baño - Bathroom	4,82
6	Terrazas cubiertas y descubiertas - Covered and uncovered terraces	18,35
<b>Superficie útil total - Total usable area</b>		<b>62,62</b>
<b>Superficie total construida - Vivienda Total built area - Housing</b>		<b>66,12</b>
<b>ZC - Zonas comunes - CA - Common areas</b>		<b>14,07</b>
<b>Total Vivienda + terrazas + ZC - Total Housing + terraces + CA</b>		<b>81,09</b>
<b>Total computable legalmente - Total legally computable</b>		<b>76,71</b>



2ºB