

SRS3112M



€220,000



2



2



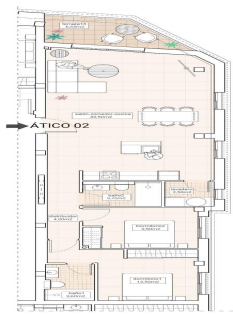
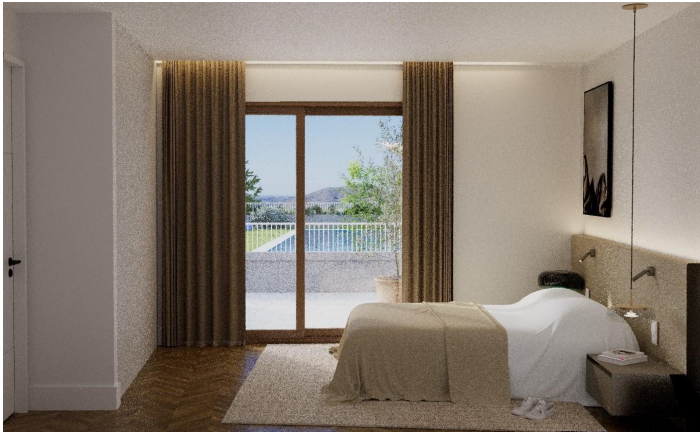
93m<sup>2</sup>



N/A



Exclusive New Build Apartments with Views of the Vineyards in Hondón de las Nieves—Modern Homes in a Unique Natural Setting—Discover this new development of flats in Hondón de las Nieves, a charming village set in a beautiful valley surrounded by olive and almond groves. This development offers 15 exclusive 2 and 3 bedroom homes, all designed to offer maximum comfort, energy...(Ask for More Details!)



**PLANTA ATICO/  
PENTHOUSE FLOOR**

| Superficie útil/<br>Useful surface         |
|--|
| Salón/Comedor/Bedroom/Living & kitchen     |
| Cocina/Kitchen                             |
| Barra/Breakfast bar                        |
| Baño/Bathroom                              |
| Comedor/Dining room                        |
| Dormitorio/Bedroom                         |
| Terreno y terrazas/Plot area               |
| Superficie útil total/Total useful surface |

|                     |
|---------------------|
| 34,50m <sup>2</sup> |
| 4,00m <sup>2</sup>  |
| 4,50m <sup>2</sup>  |
| 4,50m <sup>2</sup>  |
| 1,20m <sup>2</sup>  |
| 9,50m <sup>2</sup>  |
| 6,55m <sup>2</sup>  |
| 66,25m <sup>2</sup> |

000 An. 01/100

Tipología / Typology:  
Vivienda plurifamiliar en  
urbanización con piscina /  
multi-family residential buildings  
with swimming pool

Dormitorios/Bedrooms: 2

Baños/Bathrooms: 2



**ÁTICO  
02**

|  |                     |
|--|---------------------|
| Superficie construida/Constructed area     | 99,99m <sup>2</sup> |
| Superficie útil total/Total useful surface | 70,60m <sup>2</sup> |
| Superficie terrazas/Terrace areas          | 6,55 m <sup>2</sup> |