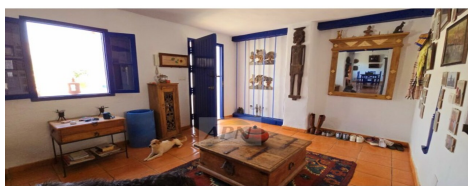


FML4292U



Country House in Alora

€420,000

5



3

275m²900m²

Beautiful property built in a semi- rural location in the village of Bermejo, just ten minutes driving in between Alora town and El Chorro.It offers both a family home together with a successful rural tourism business.It is built on a 900m² urban plot and the building extends to 275m² distributed over 2 levels.The property offers a spacious and comfortable, two bedroom accommodation wher...(Ask for More Details!)

